

Quality by Vision

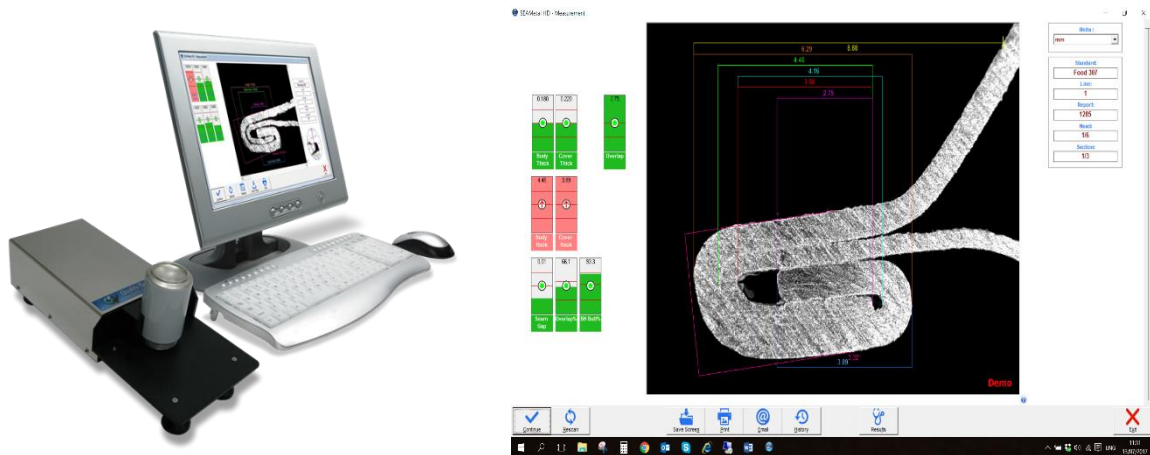
SEAMetal Lt + TBS4-CB can saw

+

Optional external gauges

Specifications, description saws & external gauges & SEAMetal LT brochure

SEAMetal LT Craft optical unit & seam image



SEAMetal LT

Automatic, Double Seam Analyzer for Craftbeer canners from Quality by Vision

- ❖ Automatic Double Seam Analyzer with Sample table for Food Cans
- ❖ Version 6.x software compatible with Win 7, or 10
 - Lifetime software license – no recurring costs!
- ❖ High Definition optical unit with USB camera
- ❖ **New!** Seam Doctor Software, *Automatic troubleshooting for seam defects* and suggests solutions (see next page)
- ❖ All measurements done instantly from the seam image
- ❖ Database saves measurements & double seam images
- ❖ Includes calibration gauge (certified by Quality By Vision)
- ❖ External seam thickness gauge as well as countersink gauge can be connected as optional
- ❖ Manuals in English

NOT INCLUDED. (but can be purchased afterwards as upgrade)

- ❖ Customizable HTML and Excel reporting system
- ❖ Automatic email alerts when bad seams are detected
- ❖ Remote access to measurement data and statistics over the network
- ❖ Software can integrate with additional digital gauges such as can height, material thickness, etc. (sold separately)
- ❖ Easy Back up
- ❖ For info and demo movie <https://www.qbyv.com/product/beverage-double-seam-hd-analyzer/>

For info and quotations please visit
Or email directly to:

<https://www.quality4food.com/contact>
info@quality4food.com

Quality4Food – Visit Address: Markt 6 - 6088 BP - Roggel – The Netherlands.
Phone: +31-6-46281669 – Skype markschatorje – E-mail: info@quality4food.com
www.quality4food.com

Specifications, description saws & external gauges & SEAMetal LT brochure

SEAMetal measurement and result analysis:

The screenshot shows the SEAMetal software interface. On the left, a 3D model of a seam is displayed with various measurement points and dimensions. A red circle highlights a specific measurement point. On the right, a 'Results' table provides detailed data for various seam parameters.

Parameter	Value	Target/Status
Body Thick.	0.180	
Cover Thick.	0.220	
Seam Thickness	3.32	↑
Overlap	2.75	
Body Hook	4.46	↑
Cover Hook	3.89	↑
Seam Length	6.29	↑
Countersink	8.88	↑
Seam Gap	0.01	
Dim A	3.88	
Dim B	4.16	
Tightness	0	↓

Calculated results:

Overlap %	86.1%
BH BUTT.	93.3%

Disclaimer: The text below is presented for informational purposes only. We make no claims or guarantees regarding the accuracy of the information and assume no responsibility for damage incurred from its use. Please contact us for information.

1st op Roll may be too loose
 2nd op Roll may be too tight
 Check Pin Height
 1st op Roll may be too tight
 1st op Roll may be set too high
 2nd op Roll may be too loose
 2nd op Roll may be set too high
 Check lifter plate pressure - it may be too low
 Check lifter plate pressure - it may be too high

7/13/2017 Long Cover Hook (End Hook) | Seam School - Craft Seaming - Double Seams Explained

Latest: High Seam Gap

SEAM SCHOOL

DOUBLE SEAMS EXPLAINED

OVERVIEW SEAM MEASUREMENTS SEAM DEFECTS TERMINOLOGY HOW TO? Q

SEAM CALCULATOR QUESTIONS?

Defects

Long Cover Hook (End Hook)

More information about cover hook.

All Pages

- Defects (36)
- How to? (15)
- Measurements (44)
- Overview (9)
- Terminology (28)

Recent

file:///C:/SEAMetal/seamschool.com/long-cover-hook/index.html 1/2

7/13/2017 Long Cover Hook (End Hook) | Seam School - Craft Seaming - Double Seams Explained

Possible causes for Long Cover Hook:

Split Seam
 How to ensure Rolls are undamaged and are safe to use?
 Low Free Space
 High Free Space
 High Seam Gap

- Tight 1st operation roll
- Short Body Hook
- Countersink is too shallow (not deep enough)!
- Over-curved end
- Incorrect 1st or 2nd operation setup

← Long Body Hook Short Cover Hook (End Hook) →

Copyright, Seam School - Craft Seaming - Double Seams Explained, all rights reserved - contact us for more information

file:///C:/SEAMetal/seamschool.com/long-cover-hook/index.html 2/2

In above images, you see how the SEAMetal 6 software not only performs a measurement of the seam, there is also an SEAM analyse option. This option analyses the seam, and if somethings are out of specification, it provides information on what can be adjusted in the seamer.

This is a unique and patented feature only by Quality by Vision

Quality4Food - Visit Address: Markt 6 - 6088 BP - Roggel - The Netherlands.
 Phone: +31-6-46281669 - Skype markschatorje - E-mail: info@quality4food.com
www.quality4food.com

Specifications, description saws & external gauges & SEAMetal LT brochure

Optional external seam thickness gauge:

- Resolution 10 micron
- Designed to measure seam thickness always under right chuck wall angle.
- For beverage can/seam diameters between 50 - 65mm
- Connected via Mitutoyo clock & multiplexer to USB port PC
- For info http://www.qbyv.com/en/beverage_thickness_gauge.htm
- See photo below left.



Optional external Countersink gauge:

- Resolution 10 micron
- For can diameters 50 - 120mm
- Easy positioning, digital indication
- Can be used as “stand-alone” or with communication to PC.
- Connected via Mitutoyo clock & multiplexer to USB port PC (optional, but not on LT version)
- For info: http://www.qbyv.com/en/Food_Countersink_gauge



Semi- automatic saw for beverage cans - TBS-4CB

- Semi-automatic twin blade saw with built-in noise reduction
- Maximum can diameter 104mm & minimum can height 100mm
- For each different diameter can a separate “sleeve” is required
- Equipped with 2 HSS steel saw blades.
- Weight ± 20kg
- Standard supplied with 1x can sleeve for specified can diameter & shape.
- Built-in noise reducer and burr collector
- Extra sleeves can be supplied for other can diameters & shapes.
- For info see TBS-4CB at: <http://www.qbyv.com/product/tbs-4cb>



Optional:

- TBS 4BC Same as above, but with
 - High speed motor
 - Carbide sawblades (more expensive but longer lasting)

Specifications, description saws & external gauges & SEAMetal LT brochure

The Quality by Vision SEAMetal system is available in 3 different versions:

1. The SEAMetal HD LITE is a basic plug and play system with minimal setup for small (craft) breweries and canneries. Can integrate with Seam Thickness and Countersink Gauges only.
2. The SEAMetal HD without SPC is a comprehensive seam inspection system with advanced capabilities. The software includes customizable reports, optional email alerts, and access and monitoring of seam data over the network. The software can also integrate with external gauges with customizable measurements.
3. The SEAMetal HD PRO includes all of the above as well as SPC software with advanced data mining and drill down capabilities

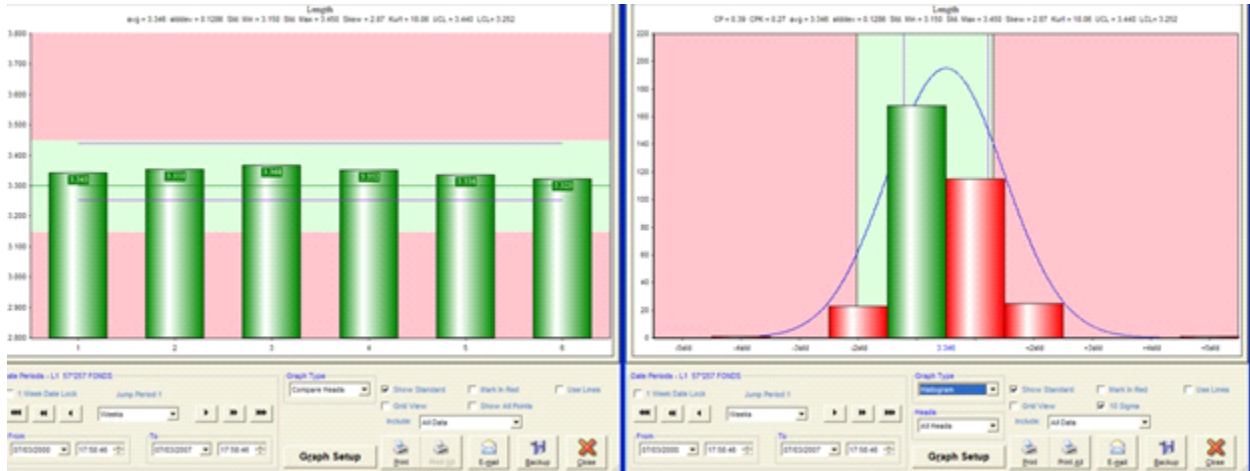
See below the differences between al versions:

SEAMetal Features Available	SEAMetal HD LT	SEAMetal HD without SPC	SEAMetal HD PRO
Instrument Connectivity Connect to external Seam Thickness and Countersink Gauges	✓	✓	✓
Instrument Connectivity Connect to digital gauges and testers, as well as keyboard for inspection data entry		✓	✓
Diagnosing Capabilities Seam Dr. Software diagnoses seam issues and suggests solutions	✓	✓	✓
External Assistance Includes integration with and full offline copy of www.SeamSchool.com	✓	✓	✓
Full SPC software Graphing software with advanced data mining and drill down capabilities			✓
Additional Inspection Capabilities SEAM-explorer™ allows to inspect any radius, angle, distance or area within the double seam		✓	✓
Seam Images Stores captured seam images with associated data. Displays images onscreen during inspections and prints on reports	✓	✓	✓
Headlines Custom fields (Product Code, Can Code, Can Manufacturer, End Code, End Manufacturer and V-jet Can Code) to add important data to your inspections	✓	✓	✓
Passwords and Permissions Four different optional permission levels controlled by passwords.		✓	✓
Recheck Capability Perform rechecks for all or only out of spec measurements		✓	✓
Views Fully customizable measurement reports in HTML and Excel		✓	✓
Assessment Digitally sign off on inspections will lock them down to conform with the FDA's 21 CFR Part 11 for maintaining digital records		✓	✓
Networking Database can reside on local PC and is backed up automatically to server. Access data from non-workstation PCs using Database Management License.		✓	✓
Scheduled Tasks Schedule repeating events for importing, exporting and archiving data, along with automatic report printing.		✓	✓
E-mailed Alerts Alerts auto generate and email when bad seams are detected with or without seam image.		✓	✓
Custom Serial Protocol (Instruments) Accepts data from most non-Quality By Vision gauge outputs		✓	✓
Custom File Protocol (Instruments) Imports data files from most non- Quality By Vision gauge software		✓	✓
Read Only License Included	✓	✓	✓

Quality4Food – Visit Address: Markt 6 - 6088 BP - Roggel – The Netherlands.
 Phone: +31-6-46281669 – Skype markschatorje – E-mail: info@quality4food.com
www.quality4food.com

Specifications, description saws & external gauges & SEAMetal LT brochure

Optional SPC for SEAMetal HD (not on LITE version)



Specifications, description saws & external gauges & SEAMetal LT brochure

External gauges (Cannot connect to SEAMetal LT)

Material thickness gauge/Mitutoyo

- Resolution 1 micron.
- Designed to measure body & cover material thickness.
- Can be used as “stand-alone” or with communication to PC.
- Connected via Mitutoyo clock & multiplexer to USB port PC (optional, but not on LITE version)



Can height gauge/Mitutoyo

- Resolution 10 micron
- For beverage and non-beverage cans.
- Standard can heights with 12,5mm range/height difference
- Optionally: extension table for other can heights
- Equipped with heavy granite base.
- Can be used as “stand-alone” or with communication to PC.
- Connected via Mitutoyo clock & multiplexer to USB port PC (optional, but not on LITE version)
- For info: http://www.qbyv.com/en/beverage_can_height.htm



Flange width gauge / Mitutoyo

- Resolution 10 micron
- Designed to measure flange width values of non-seamed cans.
- For can seam diameters between 47-154mm and max flange width values 5mm
- Can be used as “stand-alone” or with communication to PC.
- Connected via Mitutoyo clock & multiplexer to USB port PC (optional, but not on LITE version)
- See for more technical info: http://www.qbyv.com/en/Flange_gauge



Beverage Can Stripper for 2 can heights.

- Quickly strips cover hook from beverage cans for Wrinkle/Tightness rating.
- Allowing to “strip” seams of full cans; no need to open, empty & clean them!
- For one end diameter (200, 202 or 206) with optional different can diameters or can heights.
- Easily replaceable blades and bearings.
- Special stripping head with 3 blades
- Auto-motor with start/stop switch; 220V - 50Hz - 350W.
- For info: Http://www.qbyv.com/en/beverage_can_stripper.htm

