

March 2019



 **Quality By Vision**

SEAMmetal Portable destructive seam inspection



 **QUALITY**
4
FOOD

Proposal SEAMetal portable, optional different gauges for service engineers

All benefits SEAMetal has to offer but in a portable unit.

The latest version of SEAMetal offers features like Microsoft Excel integration, zoom in, automatic email alerts, network connectivity, Windows 10 support, a new SPC system, a new customizable reporting system. You can now see the image better and get a more accurate measurement than ever before, all for a competitive price.

The software also comes with SEAM doctor!

SEAMetal HD Portable

Portable High-Definition Double Seam Analyzer

1. Automatic Double Seam Analyzer with table for Food Cans
2. New! Version 6.1 software compatible with Win 7, 10 and touchscreens
3. New! Seam Dr. Software diagnoses seam issues and suggests solutions
4. High-Definition Portable Optical Unit with stainless steel enclosure
5. Includes integration with and full offline copy of www.SeamSchool.com
6. All measurements done instantly from the seam image
7. Database saves measurements and double seam images
8. Optional automatic email alerts when bad seams are detected
9. Remote access to measurement data and statistics over the network
10. Software can integrate with digital gauges (seam thickness, countersink, etc) sold separately
11. Includes calibration gauge (certified by Quality By Vision)
12. Upgradeable to full version with SPC with software download

SEAMetal HD Portable in standard case

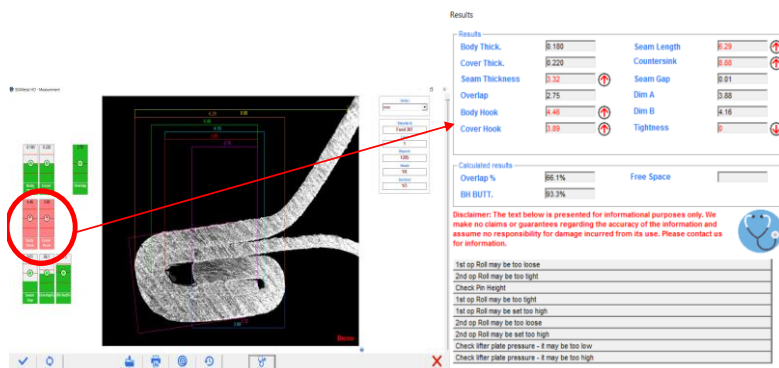


Quality4Food
Visit address Markt 6 – 6088 BP Roggel - The Netherlands
Phone: +31-6-46281669 – Skype markschatorje – E-mail: info@quality4food.com

Quality4Food.com

Proposal SEAMetal portable, optional different gauges for service engineers

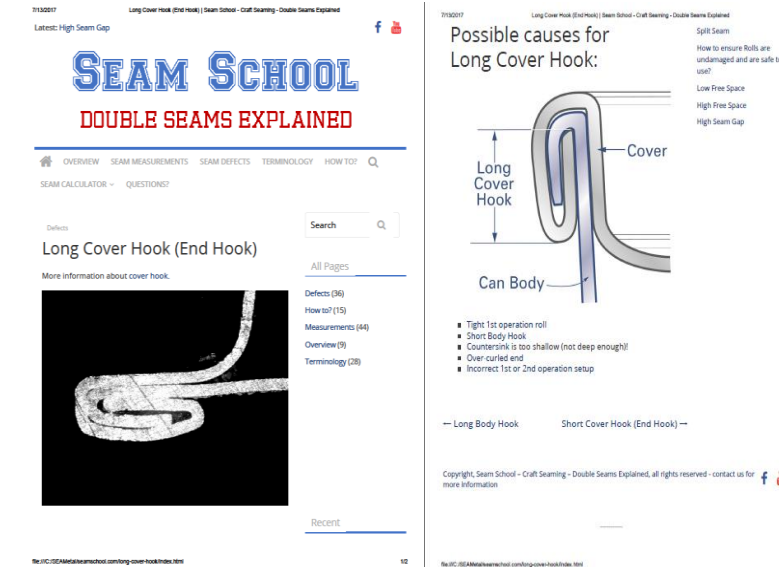
SEAMDOCTOR



The screenshot shows the SEAMDOCTOR software interface. On the left, there is a 3D model of a seam with various measurement points. A red circle highlights a specific measurement point. On the right, there is a 'Results' table with the following data:

Results			
Body Thick.	0.180	Seam Length	0.29
Cover Thick.	0.220	Countersink	0.08
Seam Thickness	0.32	Seam Gap	0.01
Overlap	0.75	Dim A	0.88
Body Hook	0.40	Dim B	0.18
Cover Hook	0.89	Tightness	0

Below the table, there are 'Calculated results' for 'Overlap %' (86.1%) and 'Free Space' (89.3%). A disclaimer states: 'The test below is presented for informational purposes only. We make no claims or guarantees regarding the accuracy of the information and assume no responsibility for damage incurred from its use. Please contact us for information.' There are also several 'Test' instructions listed, such as '1st op Roll may be too loose' and '2nd op Roll may be too tight'.



The screenshot shows the SEAM SCHOOL website. The main heading is 'SEAM SCHOOL DOUBLE SEAMS EXPLAINED'. Below this, there is a section for 'Long Cover Hook (End Hook)' with a search bar and a list of defects. A diagram illustrates the 'Long Cover Hook' defect, showing the 'Cover' and 'Can Body' components. The diagram is labeled 'Long Cover Hook' and 'Short Cover Hook (End Hook)'. A list of causes for the 'Long Cover Hook' is provided:

- Tight 1st operation roll
- Short Body Hook
- Countersink is too shallow (not deep enough)
- Over-curved end
- Incorrect 1st or 2nd operation setup

On the right:

You see how the SEAMetal 6 software not only performs a measurement of the seam, there is also an SEAM analyse option. This option analyses the seam, and if somethings are out of specification, it provides information on what can be adjusted in the seamer.

SEAMetal configurations:

- For 2-piece beverage & food cans.
- For square / rectangular / almond shape cans
- For 3-piece cans.
- For aerosol cans.

Benefits:

- Low initial and operating costs.
- High quality images.
- High repeatability and reproducibility.
- FDA 21 CFR 11 compliant.
- Automatic email alerts.
- Flexible reporting & SPC statistics

Requirements:

- Laptop or Windows Tablet Computer: Intel i5, 3.3GHz CPU, 4GB RAM or better.
- At least 2 free USB2 ports, HDD 250GB or bigger.
- OS Windows 10 Pro

Quality4Food

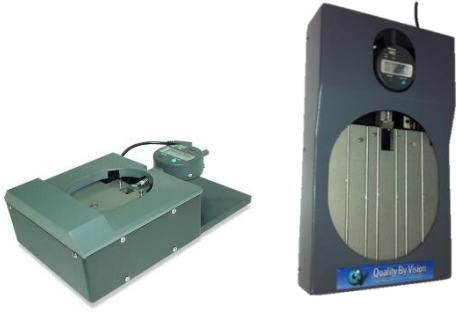



Visit address Markt 6 – 6088 BP Roggel - The Netherlands

Phone: +31-6-46281669 – Skype markschatorje – E-mail: info@quality4food.com

Quality4Food.com

Proposal SEAMetal portable, optional different gauges for service engineers

Optional external gauges and options:

<u>Seam Thickness gauge food or beverage</u>	
<p><i>System Specifications:</i></p> <ol style="list-style-type: none"> 1. Seam Thickness gauge for food or beverage cans 2. Automatic detection of Chuck wall angle. 3. Resolution 0.01 mm (Optional 0.001) 4. Communication with the computer included 	
<u>Countersink Gauge</u>	
<p><i>System Specifications:</i></p> <ol style="list-style-type: none"> 1. Including magnetic base and holder 2. Resolution 0.01 mm 3. Communication included 	
<u>Material thickness gauge</u>	
<ol style="list-style-type: none"> 1. Resolution 0.001 mm 2. Designed to measure body & cover material thickness. 3. Can be used as "stand-alone" or with communication to PC. 	
Foot switch with USB connection	
Hard Body Wheeled Trolley for SEAMetal HD and Gauges	
	
<p>L * W * D = 520 * 435 * 230</p>	

Quality4Food

Visit address Markt 6 – 6088 BP Roggel - The Netherlands

Phone: +31-6-46281669 – Skype markschatorje – E-mail: info@quality4food.com

Quality4Food.com

Proposal SEAMetal portable, optional different gauges for service engineers

Portable Saws

Portable Twin Blade saw Model TBS-4PF

[For round cans dia. 50-200 mm](#)

1. Two HSS blades 100X22X0.5 300 teeth.
2. Motor 2/3 HP, RPM: 750.
3. Operating voltage 220 V 50 Hz
4. Manual operation by a handle.
5. Locking mechanism.
6. Easy cleaning and easy maintenance.
7. Lightweight (9.7 Kg.; 12 kg with cover) with carrying handle.



Portable Saw for Food cans



With Cover

A portable beverage can saw that can be used without power supply

TBS-MC Portable saw for mobile canners

A unique new system that allows the service engineer to cut the cans right at the spot.

Advantages:

- No power supply needed as the drill is powered by a battery powered drill.
- Easy to use next to your SEAMetal portable.
- Light weight
- Easy to use
- No more looking for a power supply, or extension cables in a wet environment
- Low price
- **Drill not included**



Quality4Food

Visit address Markt 6 – 6088 BP Roggel - The Netherlands

Phone: +31-6-46281669 – Skype markschatorje – E-mail: info@quality4food.com

Quality4Food.com

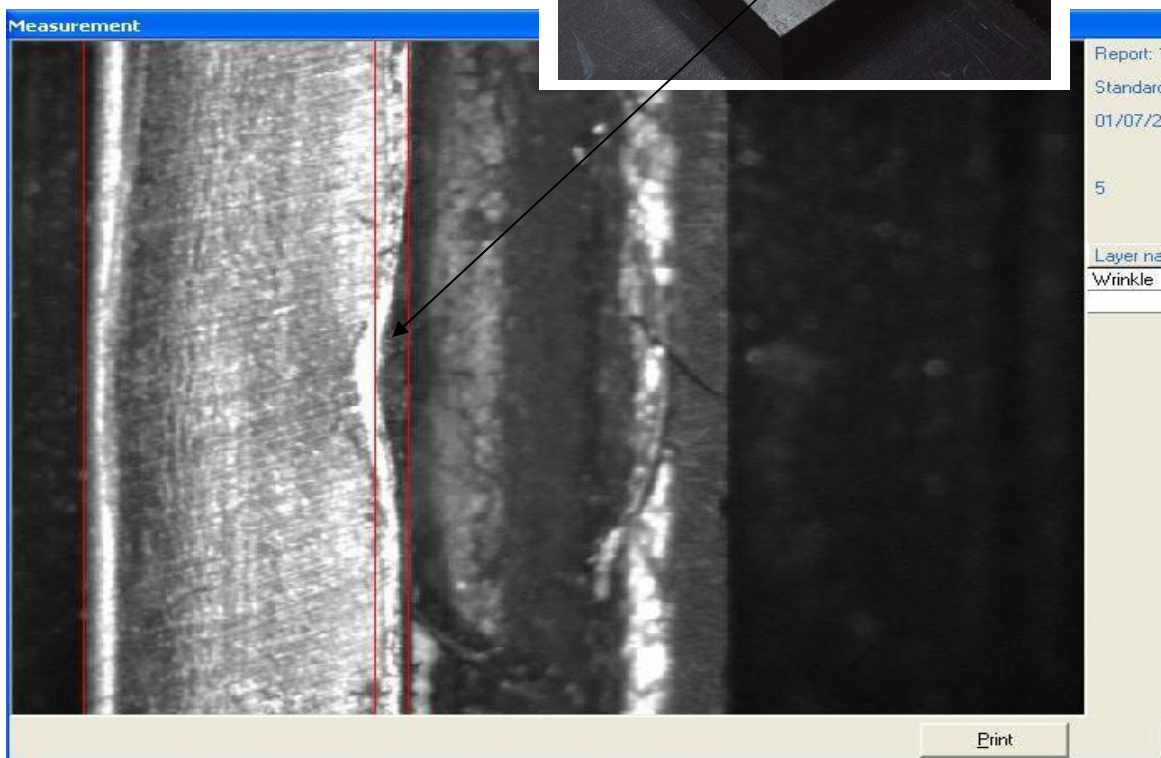
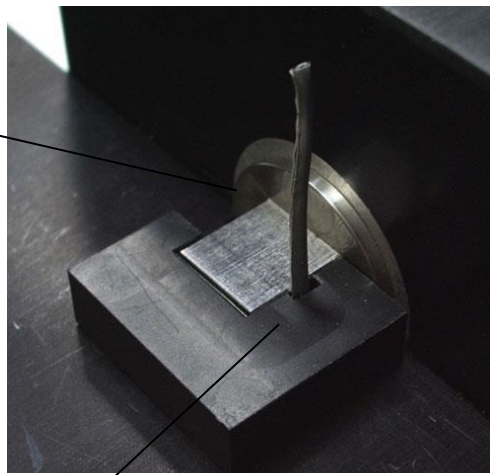
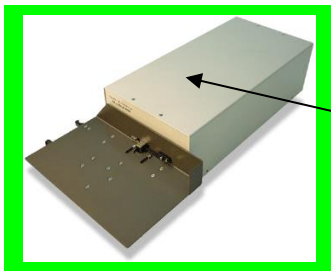
Proposal SEAMetal portable, optional different gauges for service engineers

Wrinkle rating attachment to SEAMetal optical unit - included

For info: http://www.qbyv.com/en/wrinkle_attachment

SEAMetal software allows operator to select for tightness/wrinkle measurement parameter:

- “none” or operator does not perform tightness/wrinkle measurement at all.
- “keyboard” or operator judges visually the wrinkles and types the value which he/she thinks is correct, which is done in most cases.
- “external video” or operator places stripped seam for SEAMetal optical unit (see image below) and measures in below screen with 3x measurement lines the deepest wrinkle of seam perimeter, which value will automatically appear measurement report.



Quality4Food
Visit address Markt 6 – 6088 BP Roggel - The Netherlands
Phone: +31-6-46281669 – Skype markschatorje – E-mail: info@quality4food.com

Quality4Food.com